

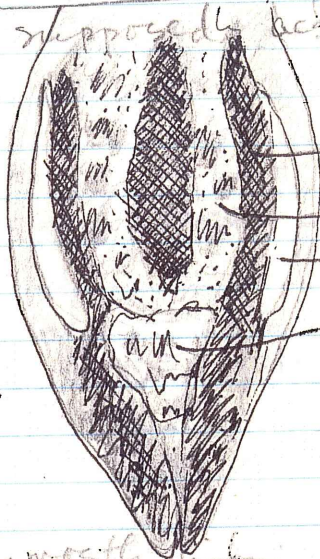
12/13/89 (cont.)

Sapsucker was in westernmost of the two lone Scots pine on the golf course. It was quite secretive and difficult to actually see at first. This bird was a juvenile with no red on it anywhere. Suspect it is yellow-bellied Sapsucker since Red-naped juvenile supposedly acquires adult color by first fall.

back of head & upper back



Back from behind



dark gray to blackish

tan

white side (more evident sometimes than others)

white lower back

dark hindcap tan-gray

white eyebrow

dark gray

white throat

gray with large silver spots

side view of head

Bird was mostly hidden from us as working new sapwells. Perhaps this bird will overwinter. Spent most of its time ~10 feet off ground. Silent, except for noise caused by claws on bark or beak pecking.

* This is the third individual sapsucker I've seen at the Cemetery since Dec 1.

12/14 Gra. Snow Cemetery (near) overcast, breezy, 30°

Mt. Chickadee

Dark-eyed Junco

Brown Creeper

Black-capped Chickadee

Red-breasted Nuthatch

Black-billed Magpie

Horse Finch

Rock Dove

Crow

Flcker

Pine Siskin

* Yellow-bellied Sapsucker (1 ♀ winter)

* Red Crossbill (1 ♂ 1 ♀) - section C / 14 spp.

• Sapsucker first found in Siberian elm pecking new sapwells but then flew to westernmost Scots pine and on golf course.

just on golf course

due south of the